

**one**northern**devon**

An overview

# We are a cross-sector alliance of organisations involved in the wider determinants of health and wellbeing...

## Public sector Partners

NHS Devon

Devon County Council

North Devon Council

Torrige District Council

Devon & Somerset Fire & Rescue Service

Devon & Cornwall Police

Royal Devon University NHS Healthcare Trust

Devon Partnership Trust

South West Ambulance Service Foundation Trust

North Devon GP Collaborative Board

Devon Mental Health Alliance

Devon Nature Partnership

North Devon Homes

## VCSE sector Partners

Torrige Voluntary Services

North Devon Voluntary Services

One Ilfracombe Ltd (not for profit)

One Barnstaple

One Atlantic

One South Molton

Torrington 100

Live Well in Braunton CIC

Holsworthy & District Community Forum

## Private sector Partners

North Devon Plus

# We have a shared vision of..

Better and more equitable health and wellbeing for the people and communities of Northern Devon

A three-pillared approach..

Person

Place

System

and ten strategic priorities...

Fuel poverty  
Climate emergency  
Strong and resilient communities

Supporting local employers  
Local supply chain development  
Increasing employment opportunities

Healthy weight  
Loneliness  
Crisis prevention and support  
Child poverty

# A partnership approach

To bring organisations and communities together to change things for the better. Collaboration is key - there are things we can only do and problems we can only solve if we work together.

One Northern Devon aims to create positive change by:

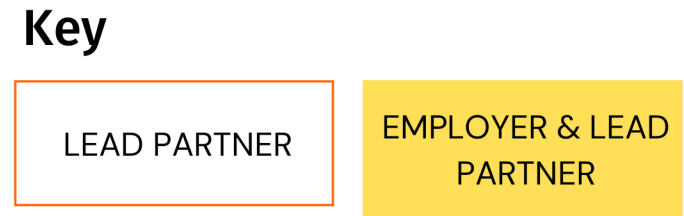
- Empowering communities
- Sharing responsibility
- Working together to improve services
- Challenging each other to work in a way that benefits all of us
- Acting as a collective voice for Northern Devon and Torridge on relevant issues
- Attracting new resources to Northern Devon and Torridge

# Our Principles

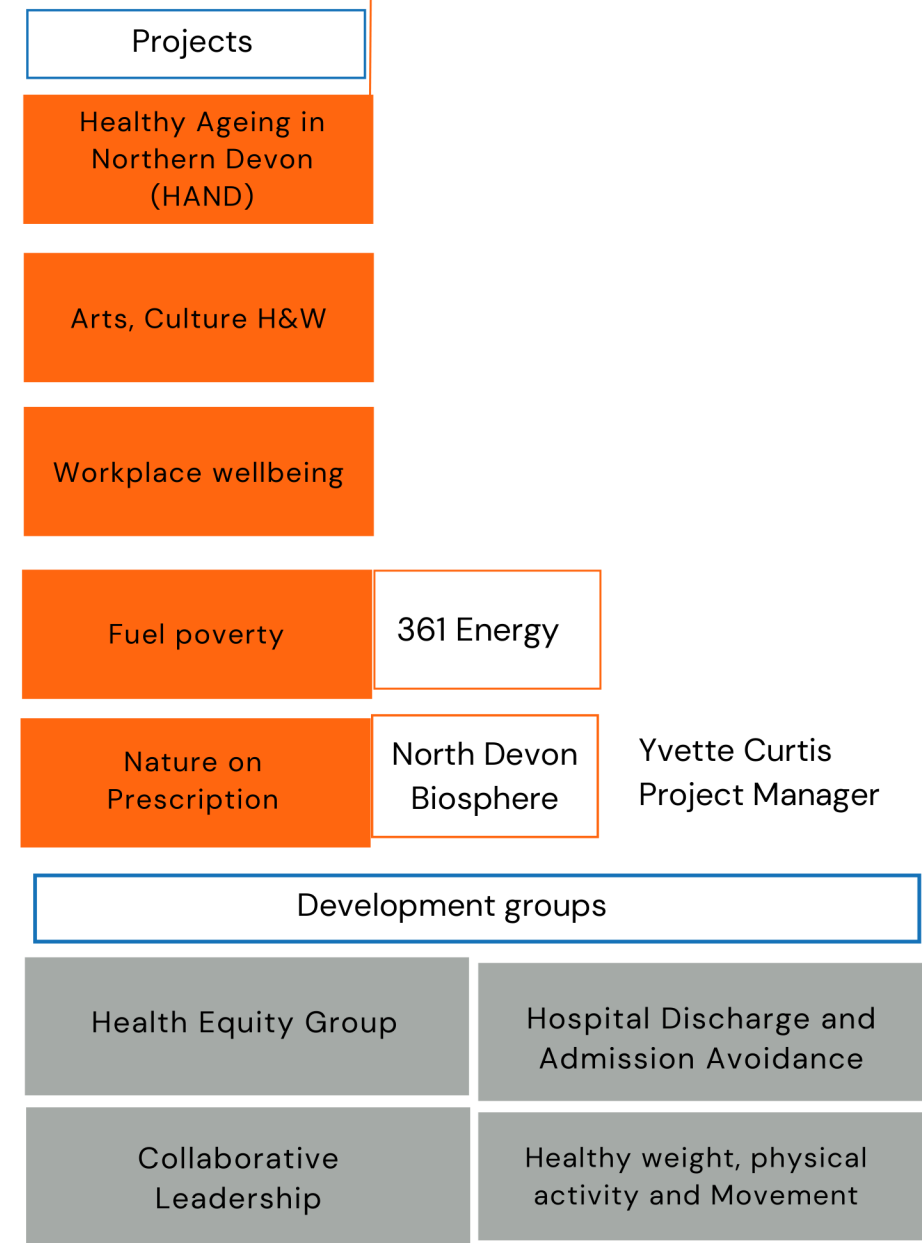
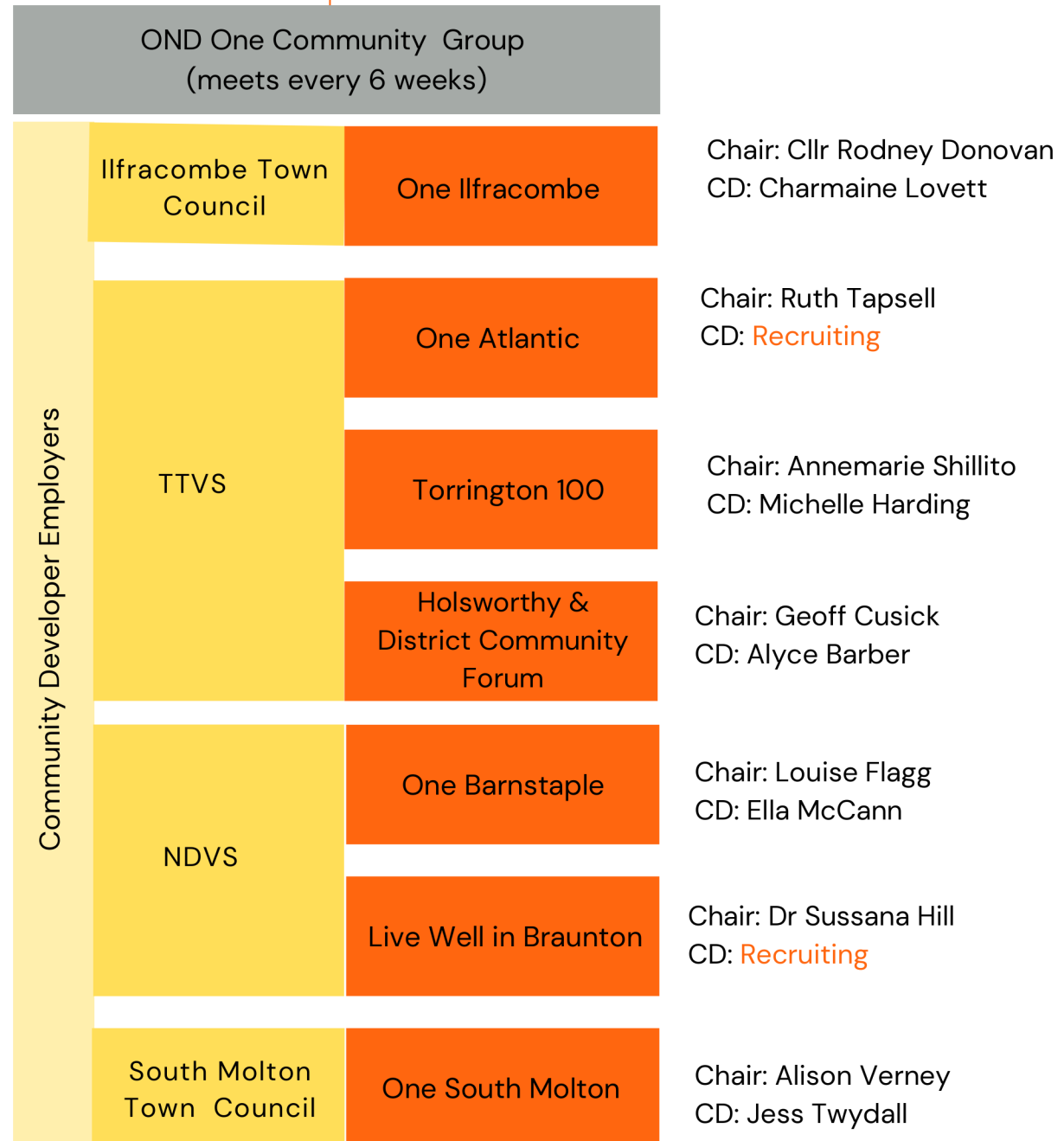
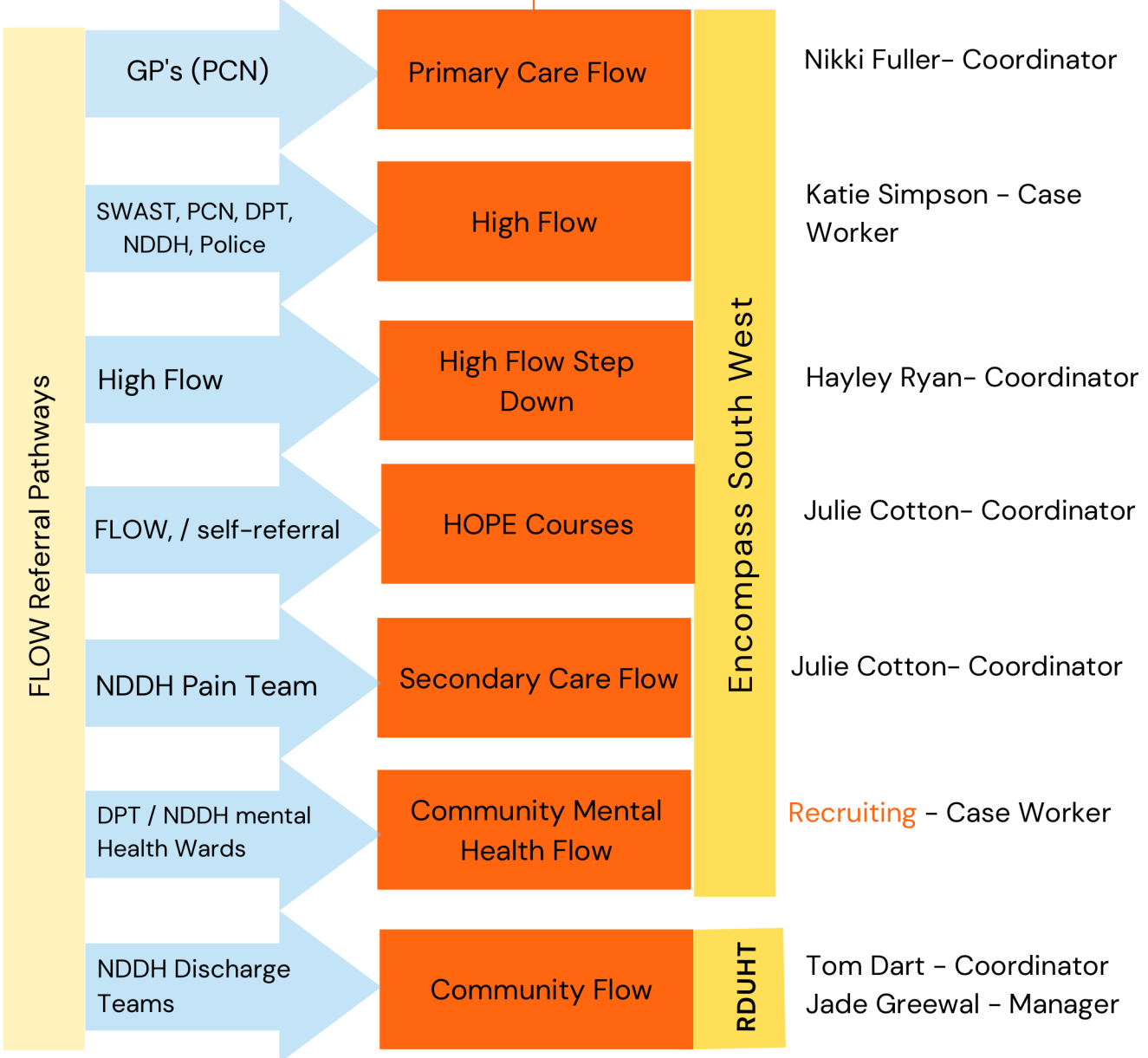
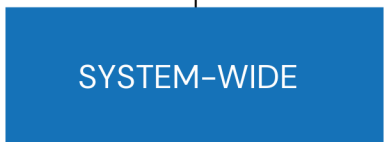
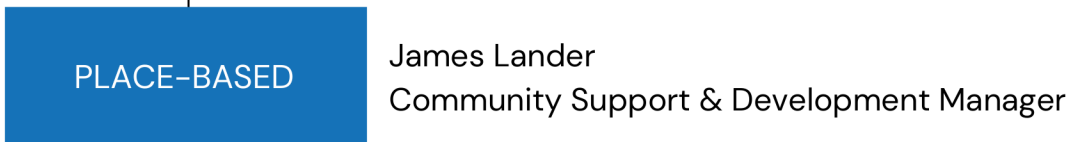
1. Gain a better understanding of the problem being tackled from the individuals directly affected
2. Redesign the service around the person, not the agency
3. Focus on prevention and improving wellbeing
4. Develop a co-ordinated, multi-agency, multi-disciplinary approach, including 'Any door is the right door.'
5. Foster community responsibility and support volunteers to help design & provide the solution
6. Establish tangible benefits to collaboration
7. Explore potential for delivery and/or commissioning of services
8. Share ownership of issues where there is no singular responsibility
9. Share/use collective assets to address needs
10. Hold ourselves to account on behalf of the people of Northern Devon and Torridge
11. Focus on sustainability

# Work is system-wide and distributed..

A map of key partner organisations that influence the development and delivery of work across the OND programme. These partners provide an extensive range of support, advice, expertise, leadership and services across Northern Devon



Programme Manger: Andrea Beacham  
Service Manager: Simon Rapsey  
Project Administration: Jumoke Famakinwa



See [Flow overview](#) for more details and staff contact details

# Key concepts

## **Systems approach**

Based on the model that everything is inter-related and inter-dependant. Systems thinking is a cohesive approach that views all subsystems as parts of an overall system, rather than acting in isolation or as segments. Tackling systemic issues demands a deep understanding of the system so that appropriate services and interventions can be designed.

## **Place-based (One Communities)**

A bottom-up, person-centred approach that meets the need of a specific location. Working collaboratively to gain local knowledge and insight and harnessing the available resources to directly tackle local issues. The One Communities are local community groups/organisations that use an asset-base community development approach, forming cross-sector partnerships that bring residents and service providers together to work on things that matter to their community.

## **Person-centred (Flow)**

The Flow approach moves away from professionals deciding what individuals need and additionally values the expertise of lived experience. It positions the person as an equal partner, alongside professionals, in developing a plan that meets their needs, goals, and outcomes based on a 'What matters to me?' conversation. There are two interventions connected with Flow:

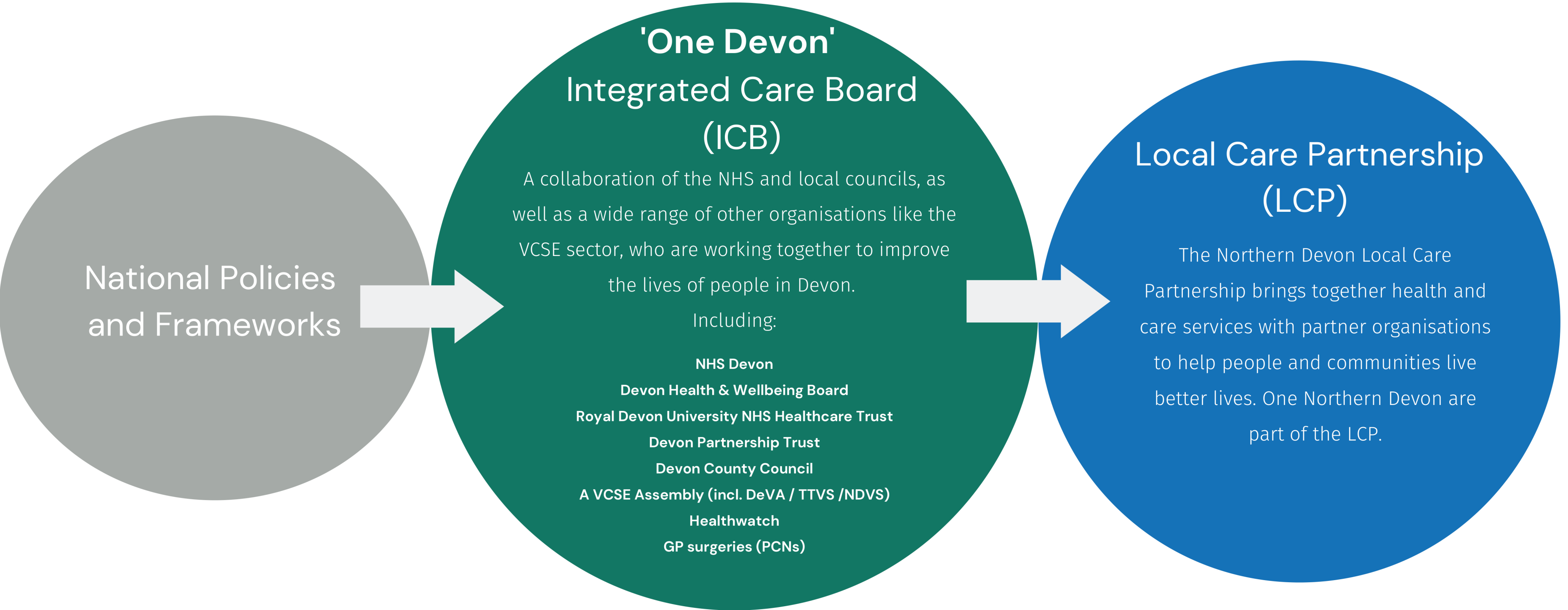
## **Team around the person intervention (TAP)**

A case specific, multi-agency team of professionals that work with the individual to create a bespoke plan and share actions. This ensures that support 'flows' around a person rather than 'bouncing between' services.

## **Community around the person intervention (CAP)**

Using the One Community model to find holistic solutions to issues faced by individuals. Collective, anonymised problem solving within a multi organisation group that develops relationships between organisations so that community support 'flows' around the individual.

# Like everyone, we are part of larger systems...



National Policies and Frameworks

## 'One Devon' Integrated Care Board (ICB)

A collaboration of the NHS and local councils, as well as a wide range of other organisations like the VCSE sector, who are working together to improve the lives of people in Devon.

Including:

- NHS Devon
- Devon Health & Wellbeing Board
- Royal Devon University NHS Healthcare Trust
- Devon Partnership Trust
- Devon County Council
- A VCSE Assembly (incl. DeVA / TTVS /NDVS)
- Healthwatch
- GP surgeries (PCNs)

## Local Care Partnership (LCP)

The Northern Devon Local Care Partnership brings together health and care services with partner organisations to help people and communities live better lives. One Northern Devon are part of the LCP.

Health & Social Care Act 2022  
Community Mental Health Framework



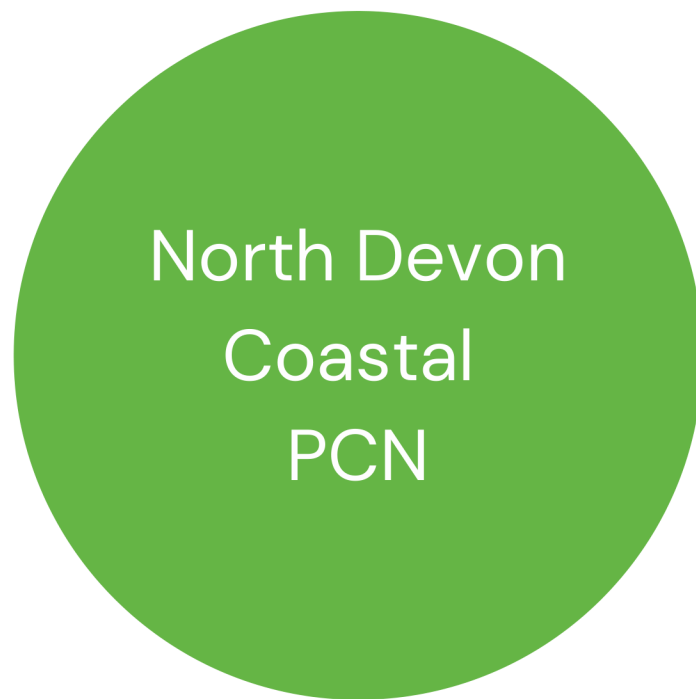
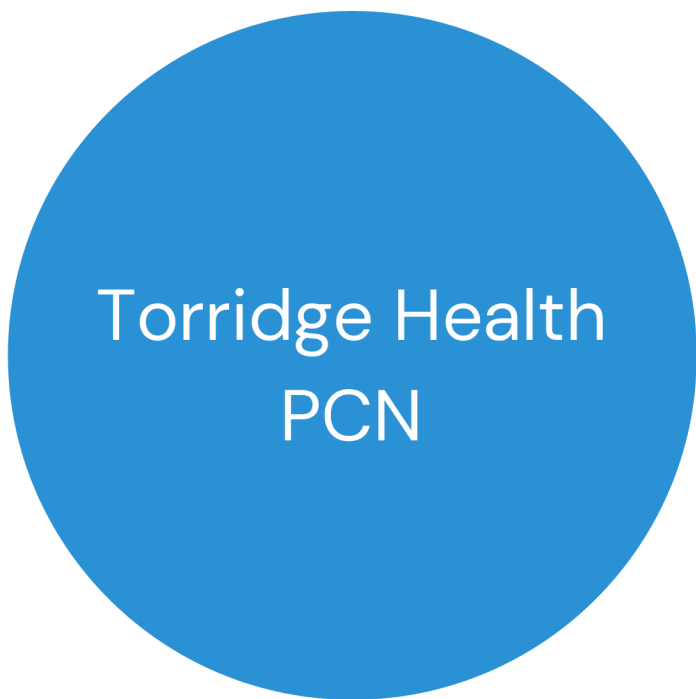
'Communities First' Strategy



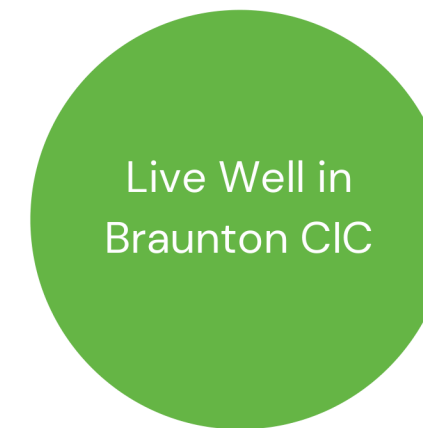
Local Implementation plan



**Primary Care Networks (PCN)**  
incl. GP's, Social Prescribers, Community Connectors



**One Communities**  
Local Community Partnerships and Community Developers



(LARGER) POPULATION SIZE (SMALLER)

# The One Communities are...

The One Communities are hyper-local, cross-sector partnerships that work together to help people and communities live better lives. Through collaborative work, partners design solutions that address the needs highlighted through work, engagement and research.



# The One Communities aim to...

**Prevent** the issues people and communities face

**Promote** individual, community and partnership responsibility

**Support collaboration and co-production** that includes valuing those with lived experience and experience of inequality

**Share best practice** to help benefit others and improve services

**Harness community assets** to facilitate value for money solutions that work

**Localise wider strategic projects** to suit the needs of the community

## Part of a wider network...

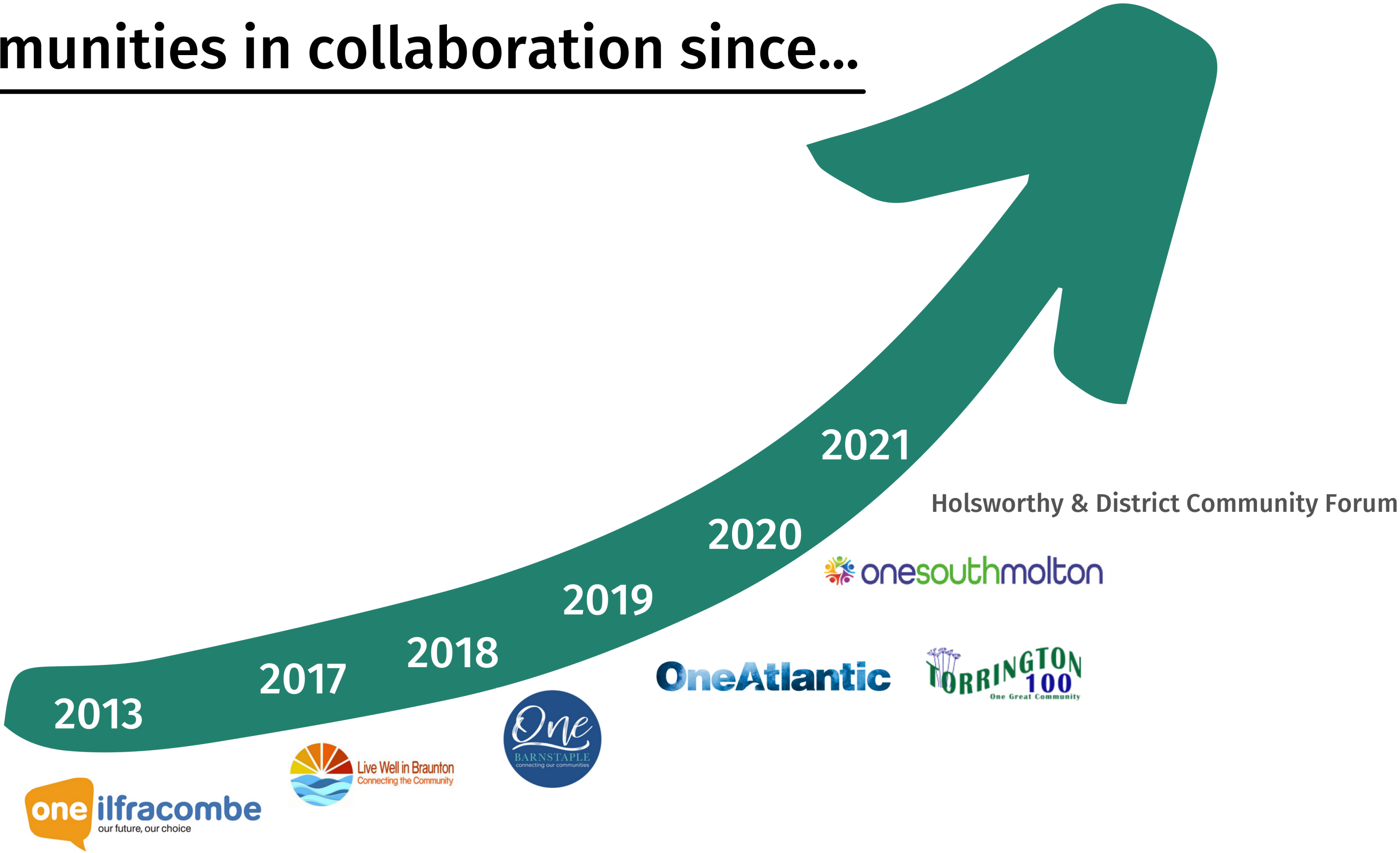
Whilst each community operates independently and defines their own local priorities, **the OND One Communities group brings everyone together** under a shared vision of 'better and more equitable health and wellbeing for the people and communities of Northern Devon'.

See the [draft Terms of Reference](#)

## Objectives

1. Assess local needs and resources
2. Develop a joint action plan to meet these needs
3. Develop a forum that allows all local stakeholders to have a say in the future development of their community
4. Collaborate with wider communities/partners, sharing best practice and exploring joint funding opportunities
5. Address wider strategic priorities
6. Become an integral part of the wider Devon Integrated Care system (Local Care Partnership)

# Communities in collaboration since...





One Ilfracombe was developed by Ilfracombe Town Council in 2013 as a not for profit Company, ltd by guarantee. They have a programme management team and a Community Development Officer. .



Live well in Braunton is a Community Interest Company started by a local GP and other community members and has been collaborating with One Northern Devon since 2017. Their community developer and social prescriber are hosted by NDVS



One Barnstaple began in 2018 as a partnership collaboration of organisations and residents who lived and worked in the area and was chaired by a local GP, the Community Developer role began in December 2019, hosted by NDVS.



Originally called 'One Bideford' in 2016. In 2019 Torrridge District Council, Bideford Town Council, Torrridge Primary Care Network, and others, created 'One Atlantic' to connect the whole area. The Community Developer is hosted by TTVS.



Formally a voluntary association (Intention Ltd Co), Torrington 100 formed in July 2019 to support Great Torrington and the surrounding 100 m<sup>2</sup> satellite village communities. The Community Developer is hosted by TTVS.



Formed in early 2020, this group rapidly formed to support South Molton and the wider Community as part of the Covid-19 response. The Community Developer is employed by South Molton Town Council.

## Holsworthy & District Community Forum

Currently in development. This forum continues the work of 'The Holsworthy Community Involvement Group'. A community developer for this area started in March 2020 -Sept 2021. Funding has now ceased.

# The role of the Community Developers...

Create **governance** that organises collaborative work to tackle local issues

Identify **community needs and gaps** in local provision

Create a **community action plan** through local engagement and Devon CC JSNA statistics.

Map **community assets and resources** to populate a shared database

Develop **provision** where gaps have been identified

Connect **local organisations** to develop and co-create solutions

Coordinate **partners** to increase the impact of engagement

Source **funding** as identified by the One Community

Signpost **individuals to appropriate solutions** by teamworking with healthcare professionals

Build **capacity** within local organisations

Promote **participation and identify barriers** to accessing local groups and services

A Community Developer is a change catalyst. In line with local and wider strategy, they work with individuals, groups and organisations, to identify priorities, map assets, understand gaps and co-develop effective provisions.